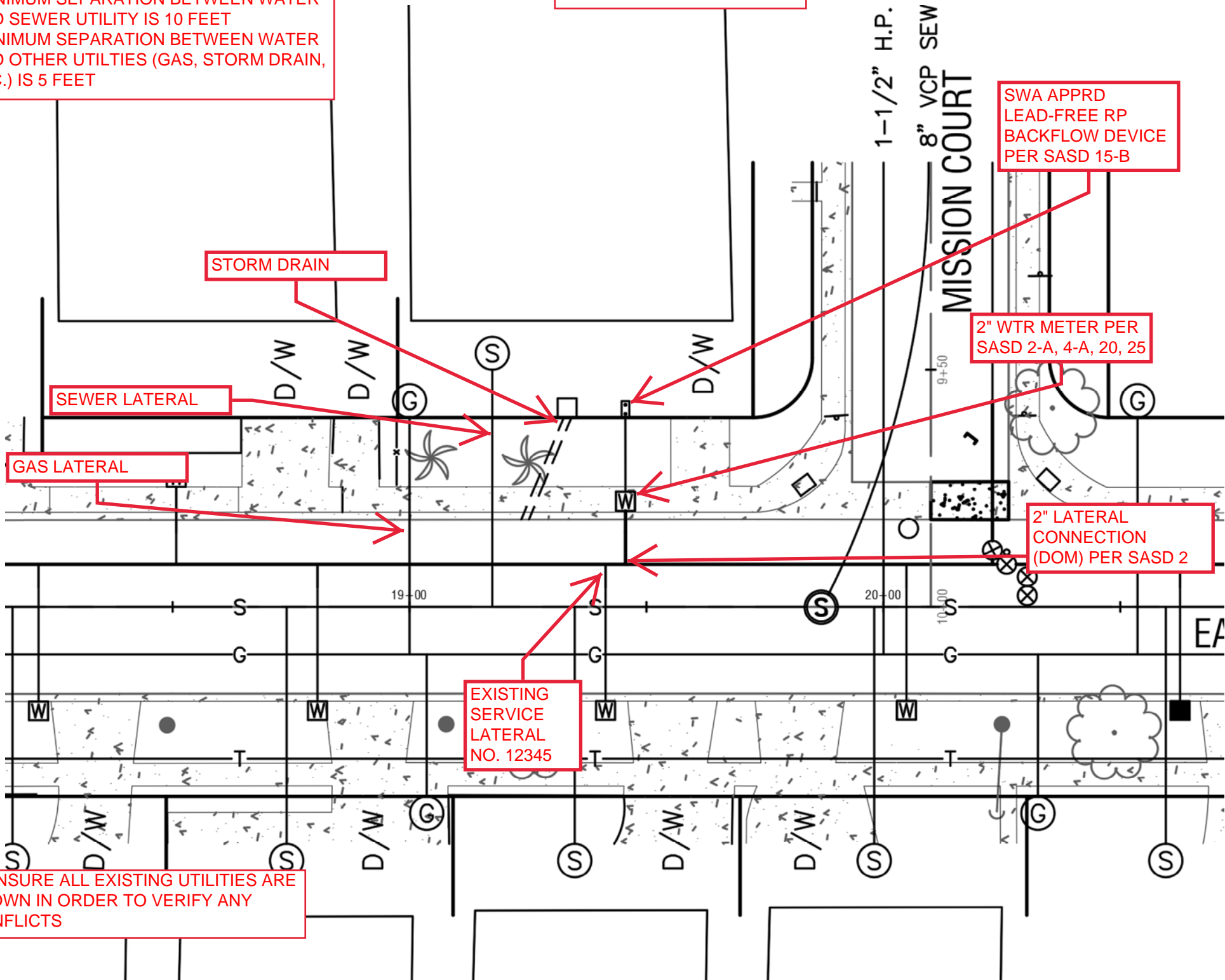


*MINIMUM SEPARATION BETWEEN WATER AND SEWER UTILITY IS 10 FEET
*MINIMUM SEPARATION BETWEEN WATER AND OTHER UTILITIES (GAS, STORM DRAIN, ETC.) IS 5 FEET

SAMPLE: DESIGN PLAN VIEW



SWA APPRD
LEAD-FREE RP
BACKFLOW DEVICE
PER SASD 15-B

STORM DRAIN

SEWER LATERAL

GAS LATERAL

2" WTR METER PER
SASD 2-A, 4-A, 20, 25

2" LATERAL
CONNECTION
(DOM) PER SASD 2

EXISTING
SERVICE
LATERAL
NO. 12345

** ENSURE ALL EXISTING UTILITIES ARE
SHOWN IN ORDER TO VERIFY ANY
CONFLICTS